

Kernel SVM

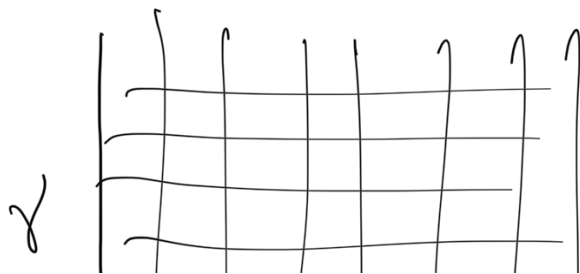
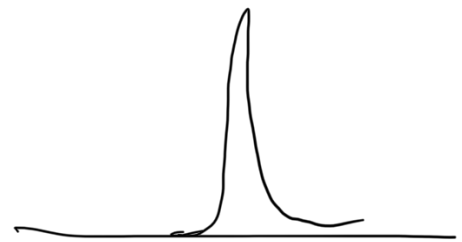
$$\exp\left(-\frac{1}{2\sigma^2} (\underline{x-0})^2\right)$$

$$= \exp\left(-\frac{1}{8} x^2\right)$$

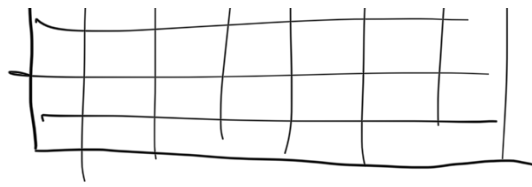
$$y^* = \text{sign}\left(\sum_{n=1}^{\text{s.v.}} \alpha_n y_n \underline{k(x_n, x^*)} + b\right)$$

let γ be high

Kernel-width



Grid-search



C